

+ F

**FREYA**

**BALANCED, CLASS A, PURE TRIODE  
DIFFERENTIAL PREAMPLIFIER**

Freya+ F is a no-compromise, ultra-high-end balanced preamp—combined with the latest unified control system, Forkbeard™.

Freya seamlessly blends the highest tech—unified app control—with a pure triode, Class A tube preamp...that also happens to include an exceptional passive mode, with a switchable discrete differential buffer for unsurpassed flexibility.

Add this to a relay-switched stepped attenuator, smart features like tube shutdown when you're not using them, and cost-no-object features like two transformers, DC heaters, and a 300V main tube rail, and you'll discover that Freya stands up to preamps costing much, much more.



The following is required by the roughly 9,542 government agencies and regulations we have to comply with. If you have some common sense, they should seem pretty straightforward. In any case, read these instructions before proceeding farther, follow all instructions, and heed all warnings. Or else!

1. If you don't know how to install audio devices, get a qualified professional to help.
2. Never use this device near water, and clean only with a dry cloth.
3. Assure adequate ventilation, do not block any ventilation openings, or place near heat sources.
4. Use only the supplied power cord or suitable replacement. Route cords away from traffic areas and protect them from being pinched. Unplug the cord from the outlet if the apparatus is unused for a long period of time.
5. To prevent electric shock, do not use the plug with an extension cord, receptacle, or outlet unless blades can be fully inserted.
6. Refer all servicing to qualified service personnel. Service is required when the device has been damaged, including cord or plug damage, liquid has been spilled or objects have fallen into the device, the device has been exposed to rain or moisture, does not operate normally, or has been dropped.

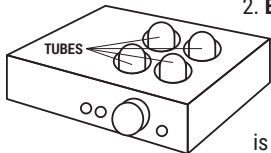


**WARNING: TO REDUCE THE RISK OF FIRE OR ELECTRIC SHOCK, DO NOT EXPOSE THIS DEVICE TO RAIN OR MOISTURE.**

**CAUTION! Dangerous voltages inside!**

1. **Before plugging in the preamp, insert the tubes.** Carefully

align the key in the tube base to the notch in the tube socket for each tube. It doesn't matter which tube goes where—all tubes in Freya are the same type.



2. **Ensure tubes are well-seated.** Push down firmly until the tube is seated on the tube socket.

3. **Plug it in, turn it on, and select Tube Output if you want to use tubes.** Otherwise the tubes won't turn on. Freya only turns on the tubes when you need them.

4. **Connect your sources.** Connect up to 5 sources to Freya's XLR and RCA inputs.

5. **Connect the output.** Connect Freya's output to your amp using XLR or RCA cables.

6. **Ensure the volume is turned down if you're using Freya for the first time.** You don't want any big surprises!

**REPLACING TUBES**

Freya+ accommodates any 6SN7, 6N8S, or 5692 tube type. Looking from the front, the right-hand tubes are the voltage gain stage. The left-hand tubes are the output stage.

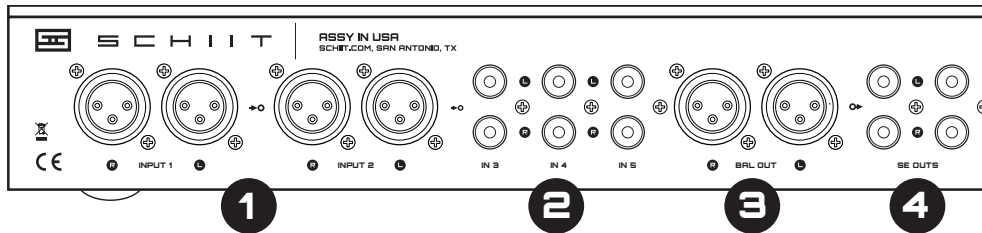
To replace or swap tubes:

1. **Turn off and unplug the preamp.** Wait a while for the tube to cool. Seriously, these suckers are pretty hot.

2. **Carefully extract the tube** by gently rocking it back and forth and pulling up.

3. **Carefully insert the replacement tube.** Align the key to the notch and press down firmly until the tube is seated.

4. **Plug the preamp back in and turn it on.**

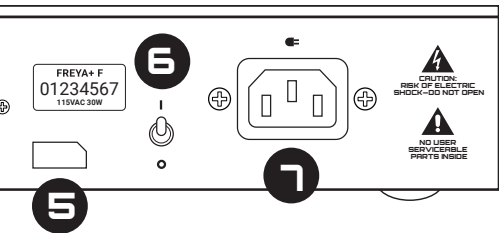


**1 Balanced inputs.** We've provided two pairs of XLR balanced inputs on Freya+ F. Connect to any of your balanced-output components using good XLR cables.

**2 Single-ended inputs.** We've also given you three RCA single-ended inputs. Connect these to any SE sources with RCA cables. We recommend you keep these cables short (3m or less) for best noise performance. Single-ended cables don't reject environmental noise like balanced XLR cables. These inputs are transformed into balanced outputs when in differential buffer or tube modes.

**3 Balanced outputs.** Connect to your amp (or amps) with balanced inputs using XLR cables. Long runs to your amp are fine; perfect if you're using monoblocks near your speakers. Balanced and single-ended outputs are all live at the same time.

**4 Single-ended outputs.** Connect to your amp or amps that have single-ended inputs using RCA cables. As with all SE connections, we recommend you keep these cables as short as possible. We've provided a pair of single-ended outputs for convenience. These are both live at the same time.

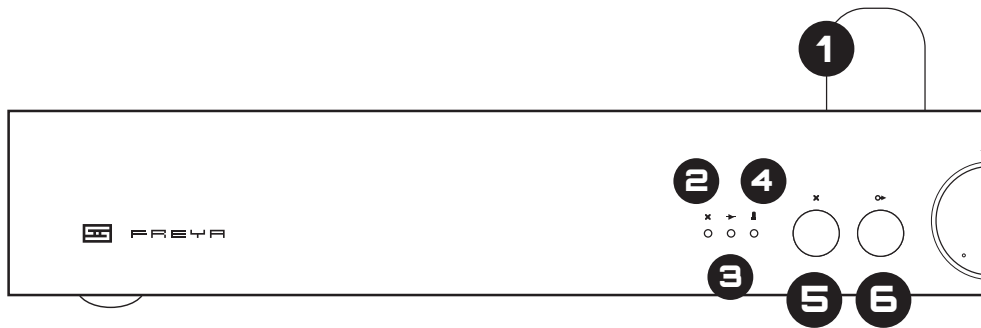


**5 Forkbeard port.** Plug in an optional Forkbeard module for full unified remote control, tube health monitoring, and more.

**6 Power switch.** Up is on, down is off. Sound only comes out when it's on. Running the preamp in Passive or Buffer mode will reduce power consumption to just a few watts, since the tubes won't be powered up; think of it as a Standby mode.

**7 AC input.** Connect the supplied AC cord here, or you won't get any sound even if the power switch is on. You can even use a fancy power cord if you like.

## OPERATION



### 1 Hot Tubes

When using the tube gain stage, Freya's tubes get hot. We don't recommend touching them when in operation, or letting your pets sleep on them.

### 2 Mute LED

This light is on when Freya is muted.

### 3 Buffer LED

This light is on when using the buffer. This stage also provides SE-to-balanced conversion.

### 4 Tube LED

This light is on when using the tube gain. This provides SE-to-balanced conversion and gain.

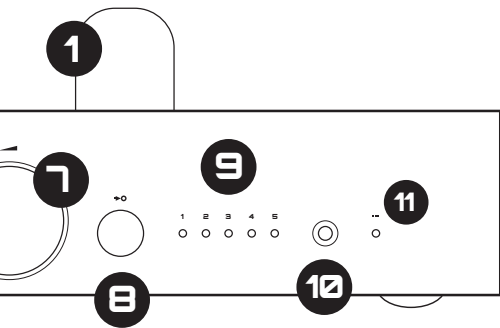
### 5 Mute Button

Press to toggle mute on and off.

### 6 Output Select

Press to select the output stage:

- Passive (resistor ladder only, 0dB gain)
- Differential buffer (0dB gain)
- Differential tube gain (12-13.5dB gain)



There's a delay when selecting the tube stage to allow for power-up and stabilization. The Status light flashes during this time. You may cancel tube power-up by selecting a different output within 5 seconds of selecting the tube stage.

### **7 Volume Knob**

Turn up to increase volume.

### **8 Input Select**

Press to select your desired input.

### **9 Input LEDs**

These lights indicate which input you're listening to, from 1-5.

### **10 Remote Window**

Receives commands from the IR remote.

### **11 Status**

When this light is flashing, Freya is in the process of doing something like the start-up delay, or turning on the tubes.



**Note:** all controls are also available remotely via the Forkbeard module, using the Forkbeard app. Please visit [schiit.com/forkbeard](https://www.schiit.com/forkbeard) for currently supported platforms and Forkbeard-specific information.

## REMOTE

Yes, Freya+ F also comes with an IR remote control. Forkbeard is better, but choice is best.

**1 Input.** Press this button to select the input you want to listen to. If you skip the input, keep pressing—it cycles back around.

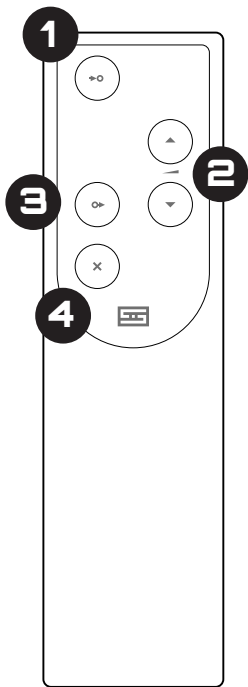
**2 Volume Up/Down.** Press the up arrow to turn volume up, press the down arrow to turn it down. Simple as that.

**3 Output.** Press to change between passive, low gain, and high gain mode.

**4 Mute.** Press to mute the preamp.

### Changing the Battery

1. Flip the remote over to reveal a single hole on the back.
2. Push the remote open by inserting the end of an open paper clip into the hole in the back and pushing firmly. It's held together with magnets.
3. Replace the battery inside with one of the same type.
4. Reassemble the remote by first inserting the clear LED in the front, then dropping the panel down onto the matching magnets. Press down gently to pop the panel in place.





**I hear hum, what do I do?**

A small amount of hum when using the differential tube output stage may occur with some tubes. Try other tubes. The noise should not be audible from the listening position in most typical systems.

**No, I mean, I have a LOT of hum!**

You may have a ground loop. Try a ground loop isolator or a device like the EbTech HumX to eliminate the ground loop.

**There's no sound for a while after I turn Freya on, and the lights flash.**

That's perfectly normal. Freya delays the output for 20-40 seconds after you first turn the preamp on for self-checks.

**What's with the clicking noises when I turn the volume?**

That's the sound of the mechanical relays in the relay-switched stepped attenuator. Also normal.

**The Status light flashes when I select tube output mode.**

Yes, this is normal. Freya only powers up the tubes when they are in use. You can cancel tube start-up if you select a different output mode within 5 seconds of selecting tube output; this allows you to skip back and forth between passive and differential buffer quickly.

**Can I use both outputs at the same time?**

Most of the time, yes. If you have products that short the input when turned off, then that can cause distortion.

**I have the volume all the way down and still hear faint music.**

Yes, that is normal with a relay attenuator. If it's bothersome, hit the Mute button to completely mute the preamp.

**It doesn't turn on, what do I do?**

Plug it in to a different AC socket. Ensure you are not currently in a blackout. Then email us if it still doesn't work.

## WARRANTY

Schiit Audio warrants to the original purchaser that this product shall be free from defects in material and workmanship for five (5) years from the date of purchase. Tubes are excepted, and covered with a 90 day tube warranty. If a defect covered by this warranty occurs during this period, Schiit Audio will repair the defective product, free of charge. Date of purchase will be based on customer receipts, otherwise date of manufacturing will be used.

**If you believe you need warranty service, contact us first.** Schiit Audio products sent back to us without a Return Authorization (RA) will be returned to the sender without repair. To contact us and obtain an RA, email [info@schiiit.com](mailto:info@schiiit.com).

**Warranty Limitations.** This warranty shall not apply if a product: (a) is modified or tampered with; (b) is damaged by negligence, accident, unreasonable use, or other causes unrelated to defective materials or workmanship, or (c) has had the serial number altered or removed.

Any implied warranties, including warranties of merchantability and fitness for a particular purpose, are hereby limited in duration to the warranty period of 5 years. In no event shall Schiit Audio be liable for consequential or incidental damages resulting from the breach of any implied or expressed warranties. Some states do not allow these limitations, so they may not apply to you. You may also have other rights which vary from state to state or province to province.



## IN THE BOX

- (1) Freya+ F
- (1) Tube set
- (1) Power Cord
- (1) Forkbeard Module  
(if you ordered it)
- (Various) Stickers and stuff
- (Infinite) Appreciation from the Schiit crew in San Antonio & Corpus Christi, TX
- (Even more) Thanks from our chassis and PCB guys in California and Nevada



FORKBEARD  
ENABLED



This product is in compliance with standards and regulations of the European Community.

SCHIIT.COM  
INFO@SCHIIT.COM

